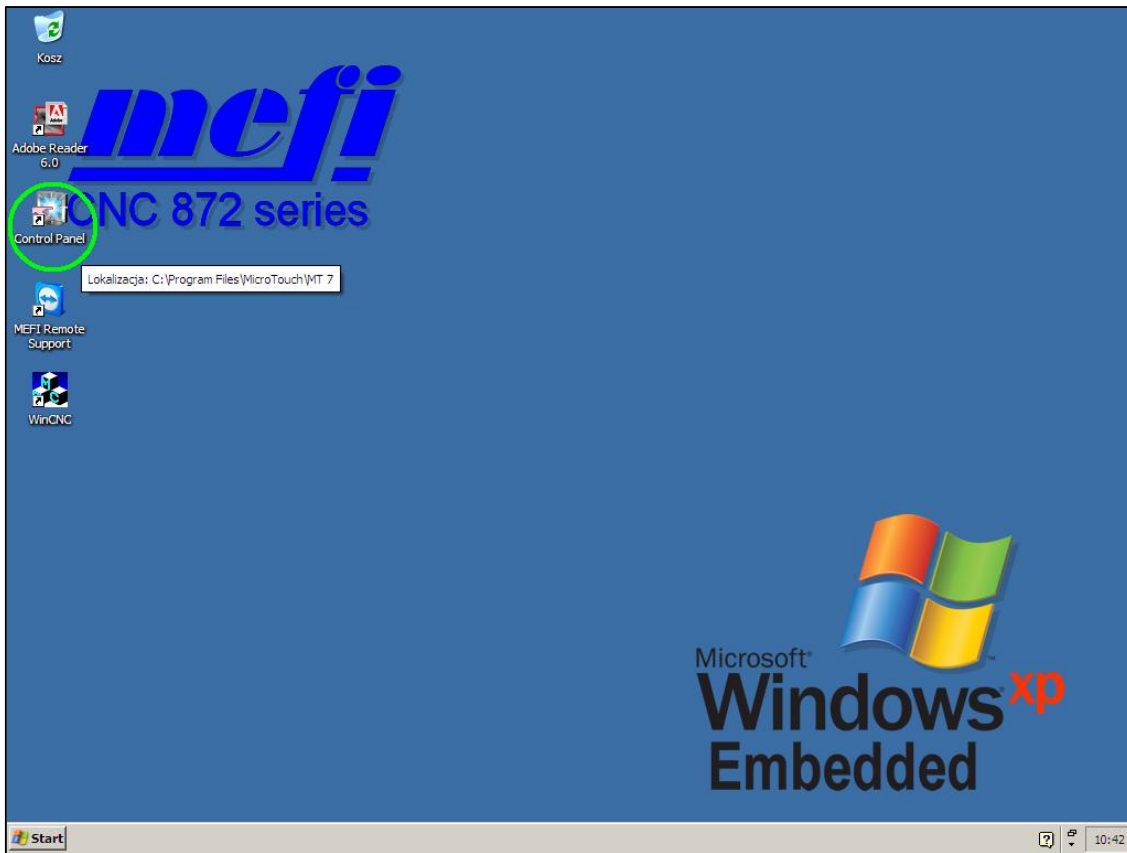
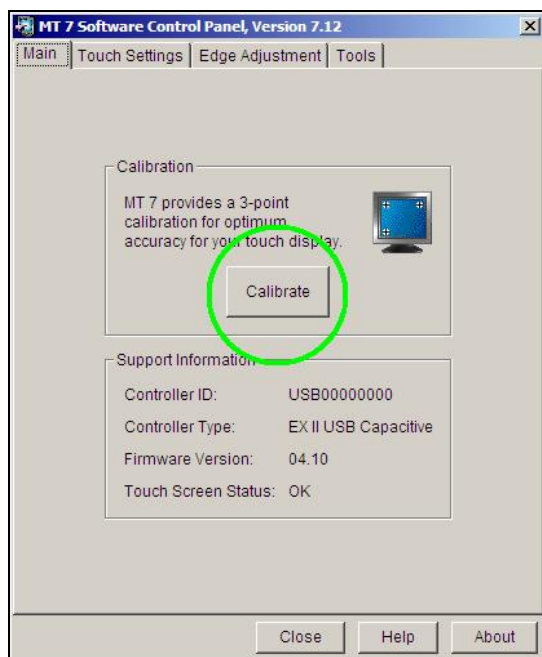


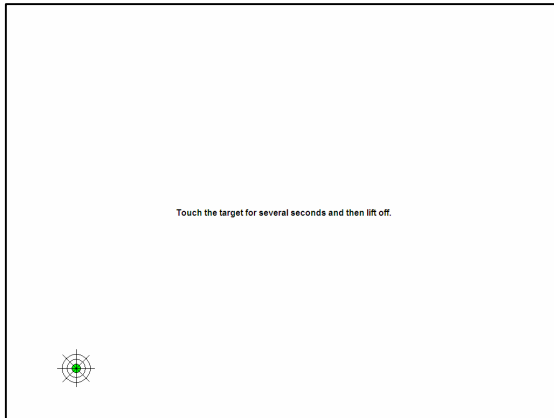
Appendix A - Touch Screen Settings



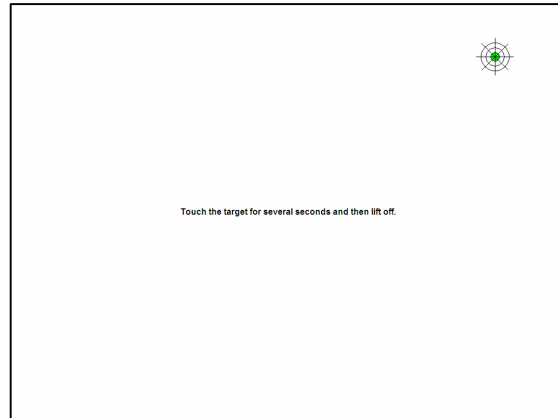
Step 1 – Start Touch Screen Control Panel



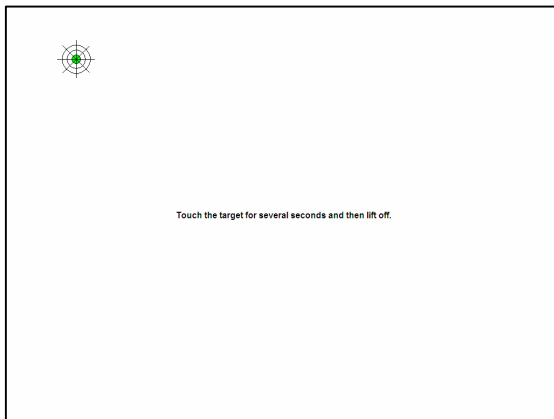
Step 2 - Press Calibrate Button



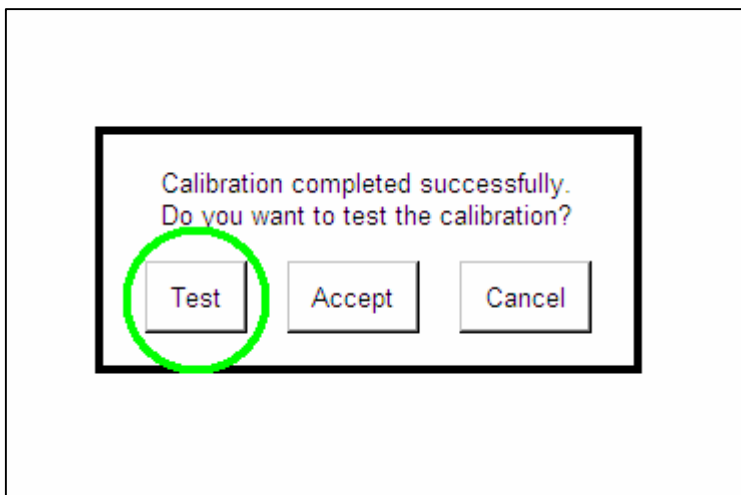
Step 3 – Press first green circle target by your finger



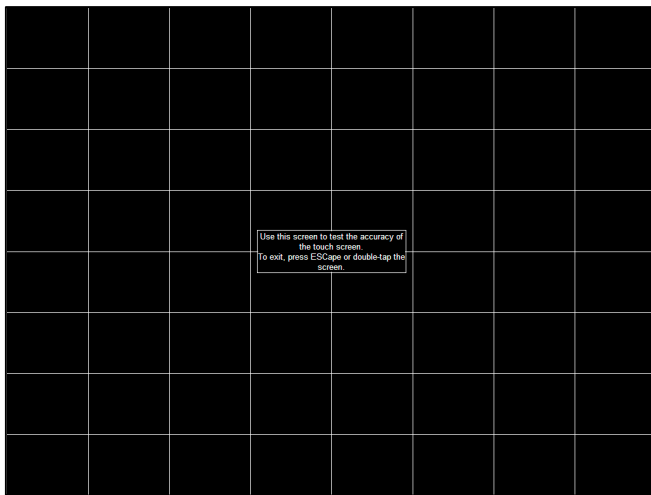
Step 4 – Press second green circle target by your finger



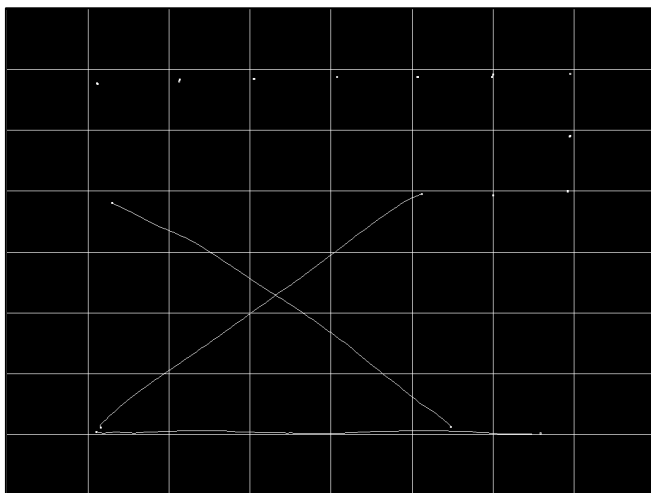
Step 5 – Press third green circle target by your finger



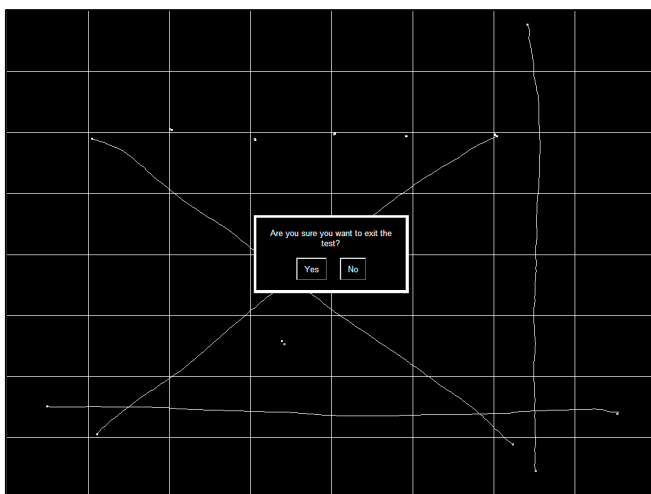
Step 6 – Press Test Button



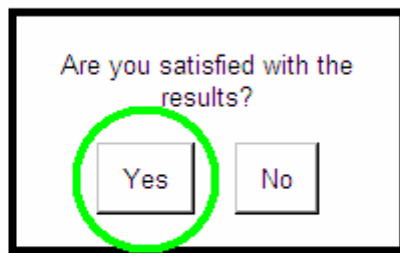
Step 7 – Testing screen appear



Step 8 – Test the settings and double-click to end the test



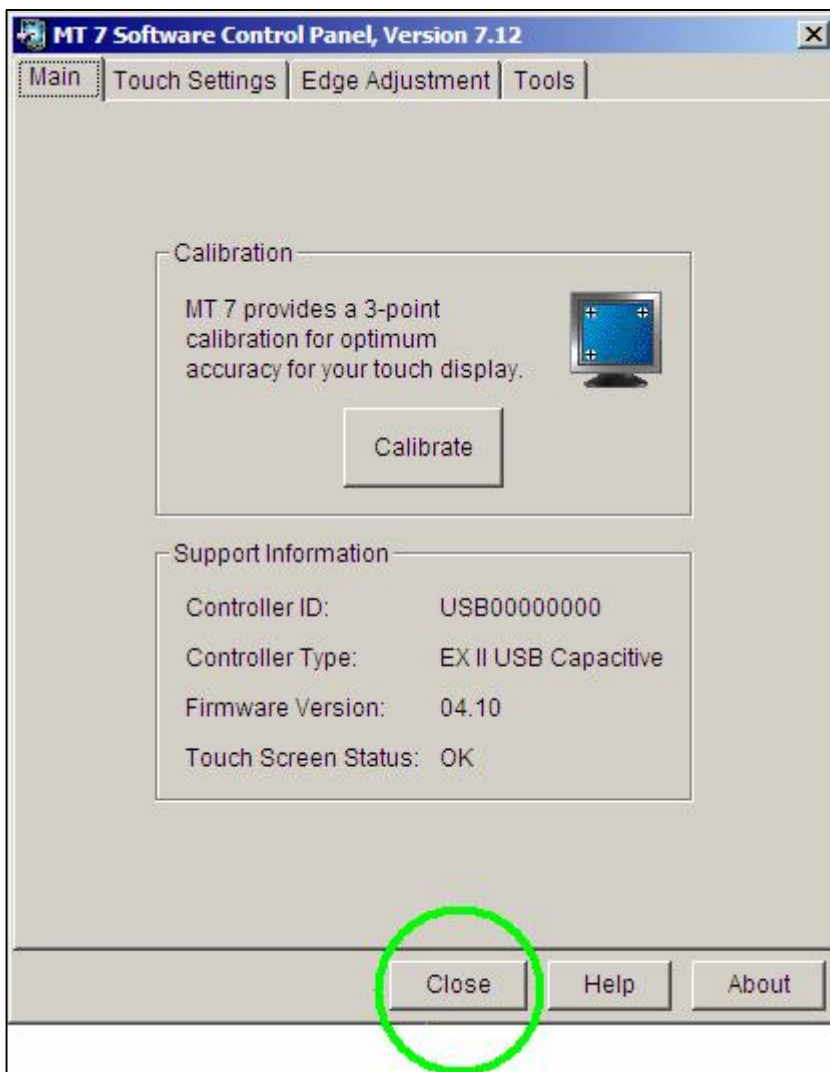
Step 9 – Are you sure you want to exit the test?
Press YES button



Step 10 – Are you satisfied with the results ?
Press YES button !!!

Note:

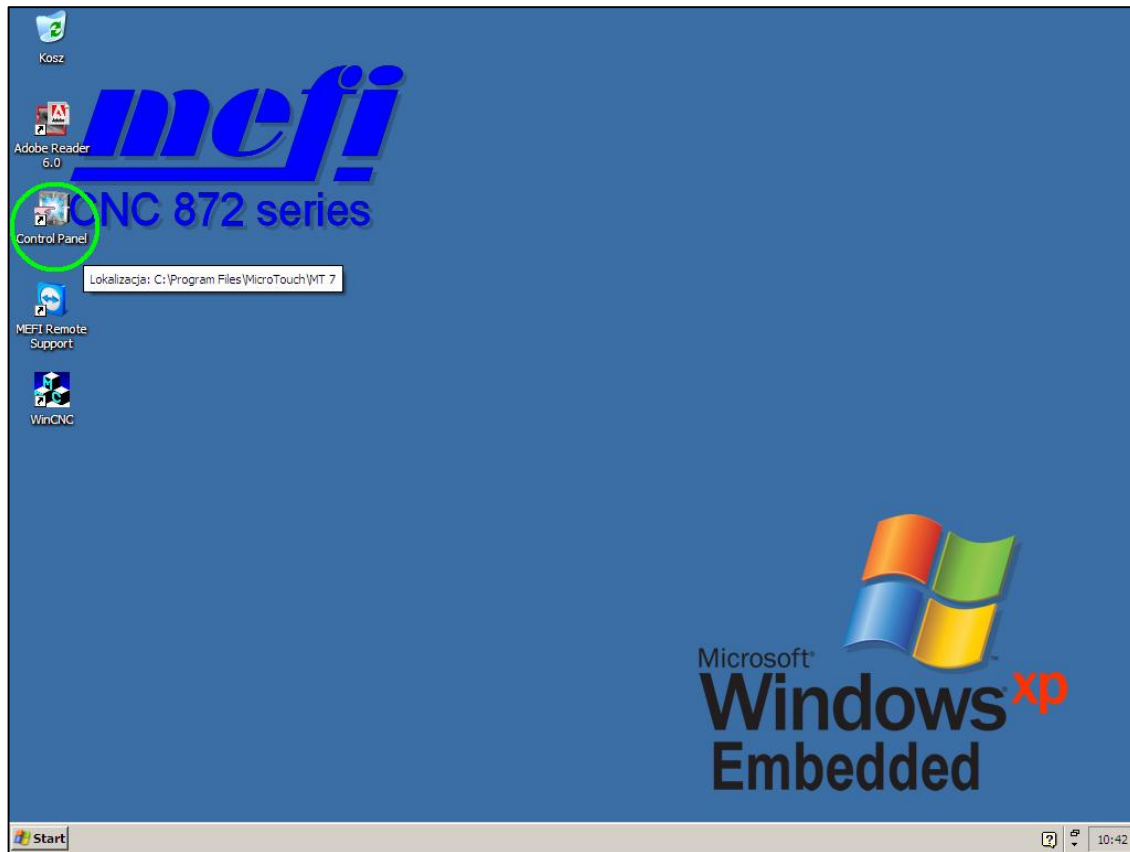
If you press „No“ button, settings could be incorrect under some circumstances!!!



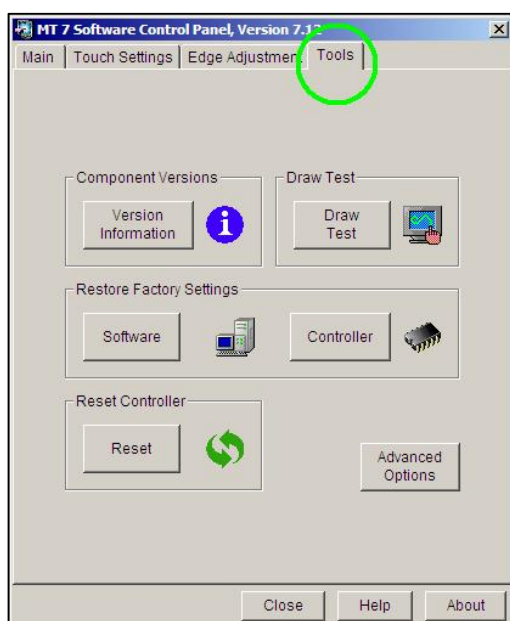
Step 11 – Close Control panel window. Setting is done

Appendix B - Troubleshooting

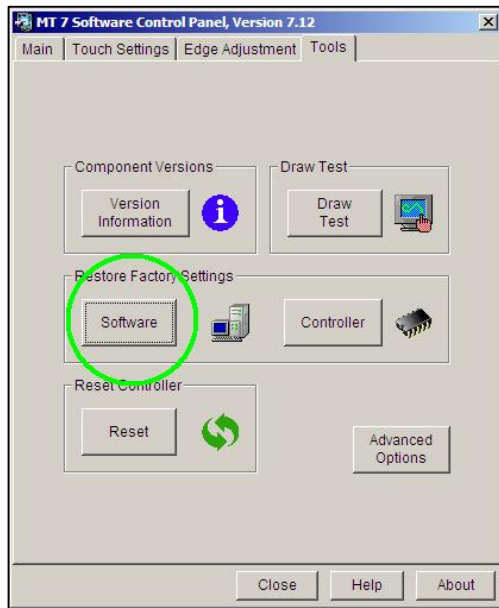
If problems with the touch screen settings occurred follow the procedure bellow. May be you will need to connect external keyboard and/or mouse to the control system .



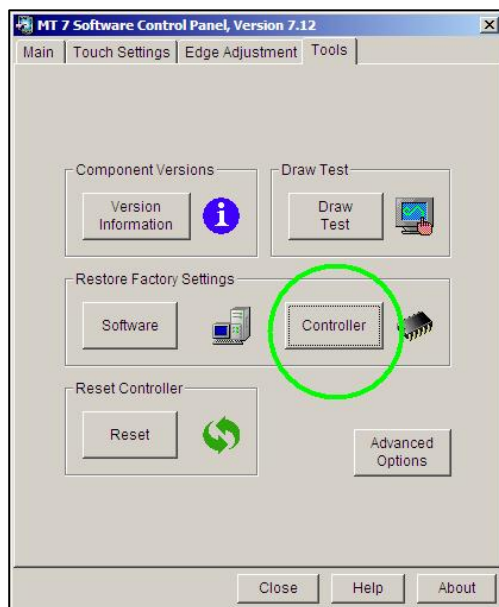
Step 1 - Start Control Panel



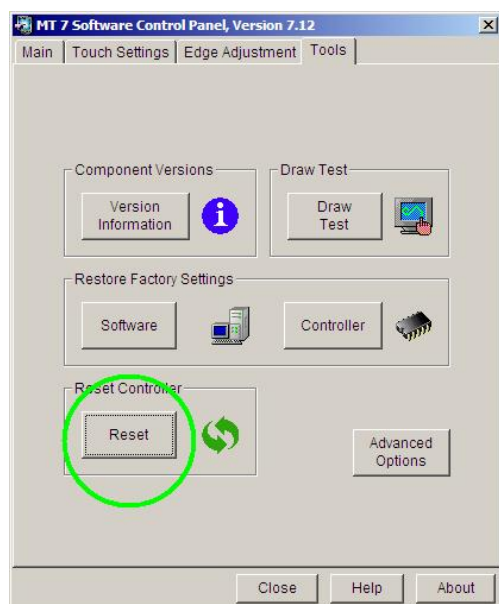
Step 2 – Select Tools



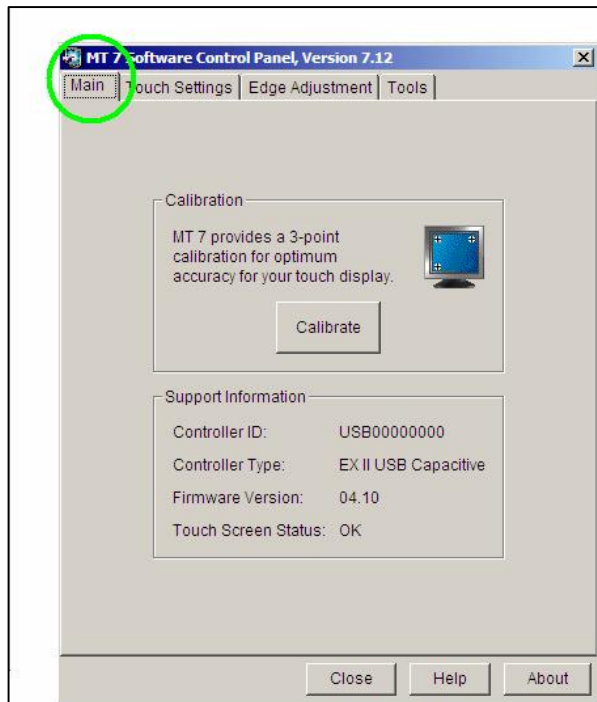
Step 3 – Press Software Button



Step 4 – Press Controller Button



Step 5 – Press Reset Button



Step 6 – Select Main and then continue from Appendix A - step 2